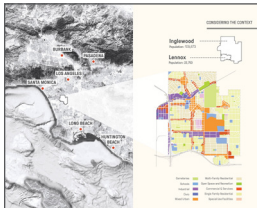


IMAGE SUMMARY

August 26, 2016

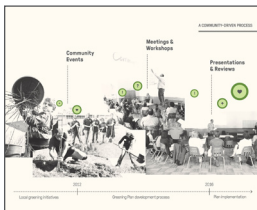
Inglewood & Lennox Greening Plan ASLA Southern California Awards 2016

1



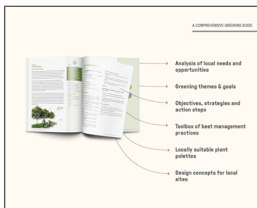
The Inglewood & Lennox Greening Plan is a bottom-up planning effort to formulate overarching visions, lay out actionable strategies, and develop accessible tools towards improved sustainability and livability of the City of Inglewood and the adjacent unincorporated community of Lennox in Los Angeles, California.

2



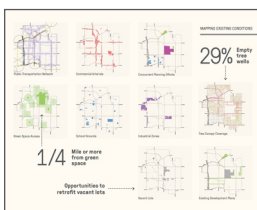
The Healthy & Sustainable Inglewood Collaborative (HSIC) was launched in 2012, harnessing initiatives by a local steering committee and initiating a non-traditional planning process that brought together dozens of stakeholders in identifying needs, developing visions, and laying out community-led implementation strategies for the greening of Inglewood and Lennox.

3



The greening plan lays out broad long-term goals and visions, concrete strategies, and specific short-term actions to reach those goals. It informs community members, businesspeople, decision-makers, and other engaged audiences on how to contribute to an urban greening transformation in their communities.

4



Data analysis and mapping with emphasis on open space and spatial relationships, planning regulations, zoning and land use, topography, water resources, and vegetation was used to identify, analyze and graphically present greening opportunities in Inglewood and Lennox, as well as to inform a selection of sites for conceptual design studies.

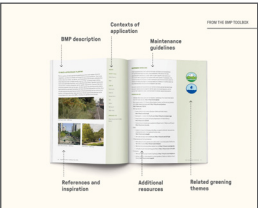
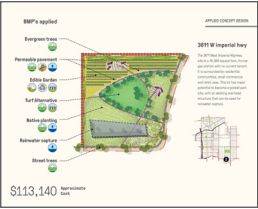
5



Ideas and priorities generated from public workshops and stakeholder meetings were coupled with findings from data analysis and mapping exercises to establish six different priority themes under which the goals, strategies and tools of the Greening Plan are organized.

IMAGE SUMMARY (continued)

Inglewood & Lennox Greening Plan ASLA Southern California Awards 2016

- 6**  Offering accessible guidance to greening efforts at various scales, the Greening Plan presents an extensive range of Best Management Practices that provide stakeholders and community members with ideas, how-to information, and direction towards additional resources. The BMP's become action steps towards the overarching visions and goals, tailored for local application.
- 7**  Each Best Management Practice is laid out as a cut sheet in the Greening Plan. It offers a descriptive overview, points to the contexts of application suitable for the particular greening effort, gives an approximate cost estimate for implementation, offers guidelines for maintenance, and lists additional resources for information.
- 8**  To illustrate how the Best Management Practices can be practically applied towards greening goals in the short and long term, the Greening Plan presents conceptual designs for eight local sites. The sites were selected based on stakeholder input and identified needs and opportunities.
- 9**  Each concept design incorporates a range of Best Management Practices adapted to the conditions of the site, and offers an estimated budget for each application and an overall cost for implementation of the design.
- 10**  The Greening Plan document will be made available to a diverse range of audiences, informing steps towards implementation at various scales by City, County and other government representatives, organizations, businesses and residents - from potentially adopting portions of the plan as planning policy to greening in your own backyard.