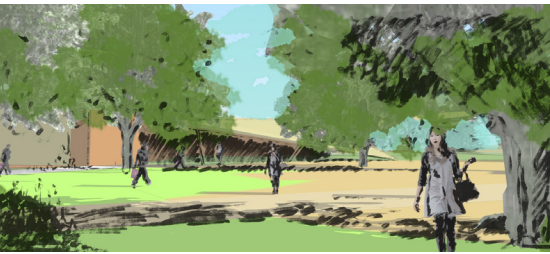


1 Welcome to **Burbank Junction** A new space to live, work, + play in the heart of Burbank, CA

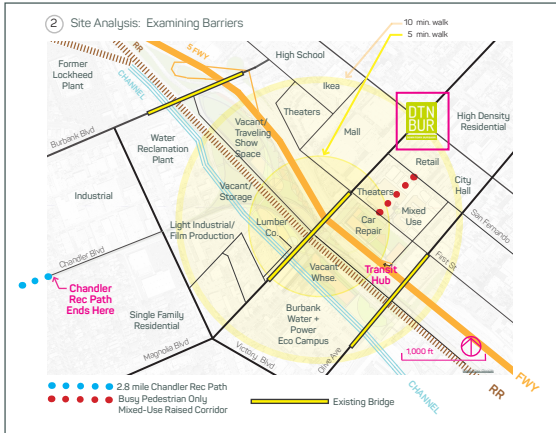


Take a Barrier + Make a Seam

Stitch together a divided city

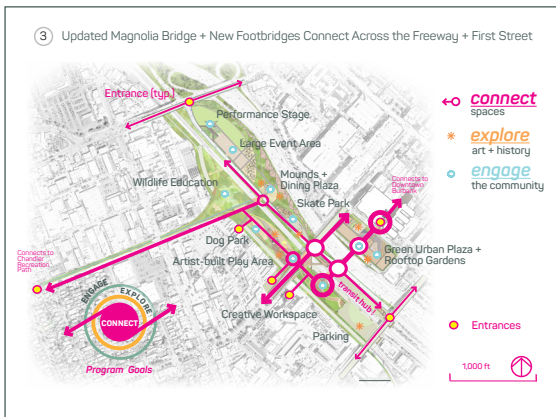
## Slide 1: Intro

Burbank Junction, a new 37 acre park complex centered around an existing transit hub in downtown Burbank, will take vacant and underused land in the heart of the city to make a dynamic space that stitches together the two halves of the city long separated by industrial and infrastructural barriers.



## Slide 2: Site Analysis: Examining Barriers

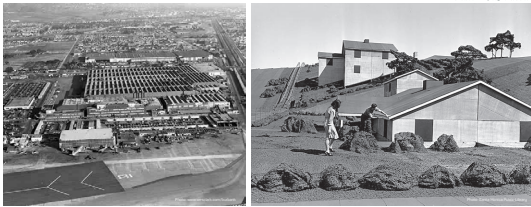
Currently the freeway, the railroad, and the drainage channel separate Burbank's vibrant downtown core from both the transit hub and the regional bike path. Empty lots and several blocks slated for demolition are given new life as mixed use, performance, and work spaces set in a green oasis that will improve the quality of life for residents and visitors.



## Slide 3: Connect, Explore, + Engage Burbank

The park will *connect* physically by providing new bridge infrastructure and transit connections, while landscape installations artfully *explore* Burbank's history of employing artificial landscapes. Arts programming and dynamic green social spaces will *engage* the community socially while highlighting water and resource conservation.

4 Site History: Artificial bucolic landscapes were created ABOVE to conceal massive industrial ones BELOW.



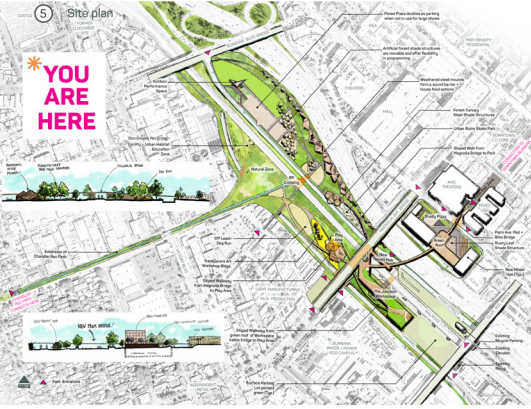
Burbank's Lockheed Aircraft Plant in 1941 prior to camouflage. Faux farm landscapes were created above the nation's aircraft plants.

The city of Burbank was largely a company town, built by the aircraft and film industries, with Lockheed alone employing 98,000 people during WWII. During the 1940's, Burbank's powerful film and aeronautical industries intersected to work on war efforts to conceal the enormous Lockheed Aircraft Plant, which was a few blocks away from the project site. To prevent potential bombing, an artificial landscape layer was created above the plant by the local film workers. The entire plant and surrounding areas were covered in a false elevated layer made of 1000 acres of green painted burlap netting, which was dotted with translucent buildings that mimicked Burbank's agricultural and small manufacturing past, along with abstract chicken wire vegetation and working catwalks hiding steep slopes and factory smokestacks.

## Slide 4: Burbank's History of Manufactured Landscapes

Camouflage exists both in nature and in the built environment, which frequently strives to emulate the natural world. A new abstracted nature is inspired by Burbank's topography and by the use of manufactured landscapes by Burbank's important film and aeronautical industries.

5 Site plan



## Slide 5: Site Plan + Elevations

Welcome to Burbank Junction! An updated Magnolia bridge connects directly to the Transit Hub and Creative Workspace buildings, which also link the popular 2.8 mile long Chandler Recreation Path with new mixed use spaces in downtown Burbank. A Storm Water Recycling Facility with drought tolerant demonstration gardens flanks the existing drainage channel.

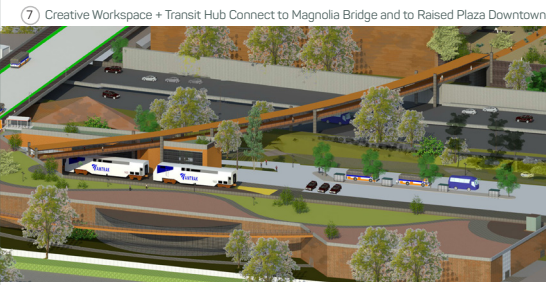
6 New Infrastructure Links the City Together



## Slide 6: New Infrastructure Links the City Together

New footbridges for pedestrians and bicyclists to safely cross the freeway to reach the existing Transit Hub, an idea proposed in Burbank's Bicycle Master Plan, are designed to connect the transportation and ride share center whose roof connects directly onto Magnolia bridge with sloped walkways down to both east and west Burbank.


⑦ Creative Workspace + Transit Hub Connect to Magnolia Bridge and to Raised Plaza Downtown



**Design Solution:** Catwalks + Living Green Roofs

A multi-layered park is created that employs catwalks to connect both across and below the bridge. These reference the functional raised walkways used during the war that were used during the war at the false landscape layer, which was made of painted burlap. Catwalks are also an integral feature surrounding and spanning the upper surface of all of Burbank's production facilities to provide access to lighting and rigging supplies.

**Design Inspiration:**  
(Artificial) Green Roofs and Camouflaged Buildings



## Slide 7: Creative Workspace and Transit Hub at Bridge

The Magnolia bridge directly interfaces with the roofs of the Transit hub and Creative Workspace buildings. Arched footbridges lead down to the park space below, while a covered bridge connects over the freeway to reach the new plazas and amenities at First street and the downtown core.

⑧ Downtown's New Mixed Use Plaza Connects to Existing Raised Corridor Across First Street



**Design Solution:** Green Roof Connects to Existing Raised Plaza

A green oasis is created on the rooftop of the First Street plaza with direct and convenient access to the entertainment, retail, high density residential, and civic services downtown. This living, planted green roof references the (painted) green roofs that concealed Burbank's factories during the war, as well as the painted scenery and backdrops used on film production sets.

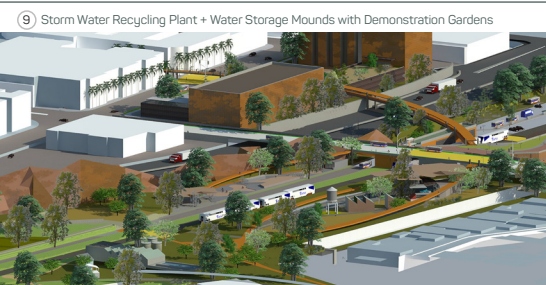
**Design Inspiration:**  
Green Netting Roofs Created a False Landscape Layer Above Factories



## Slide 8: Downtown's First Street Mixed-Use Plaza

The First Street plaza house two mixed-use high rise buildings that flank a public gathering space on top of and around a new community center. A footbridge connects this green space with the bustling mixed-use and entertainment core at the pedestrian-only Palm Ave court, which is already raised 11' above the street level.


⑨ Storm Water Recycling Plant + Water Storage Mounds with Demonstration Gardens



**Design Solution:** Manufactured "Mountains" Muffle Noise

Deliberately angular manufactured "mountains" form a physical and noise barrier to the adjacent freeway and act as above ground storage tanks for water processed by the Storm Water Recycling Facility. These weathered steel structures reference the local Verdugo Mountains to the east and play off both the artificial "natural" sets used in film production as well as the austere angular forms of Lockheed's Sea Shadow ship.

**Design Inspiration:**  
Lockheed's Angular Sea Shadow Ship

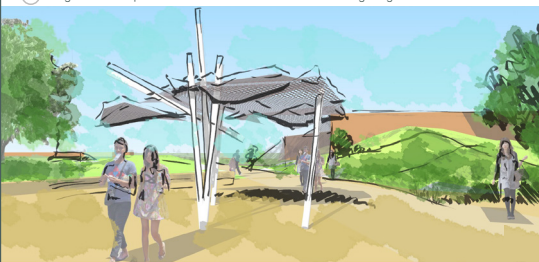


## Slide 9: Storm Water Recycling and Manufactured Mounds

The project site is adjacent to a drainage channel, and is in between the water reclamation plant for wastewater and Burbank Water and Power's innovative Eco Campus. A new Storm Water Runoff Recycling Plant to treat urban runoff will be surrounded by a native demonstration garden modeling water conserving plants and techniques.



10 Large Flexible Space with Shade Structures for Community Programs + Events



Design: Movable "Tree" Structures Offer Shade

- Shade "trees" offer flexibility in programming spaces and can be stored if large touring shows need extra space
- Hicpiet aliquae nonsequi inusdan imodit pre aliqui sunt rem
- num siti odit que laboresequi dolorum harchicilit fugit, quam harcid ut quaspicipsa verchilit volorro mi, ipis doluptaquia dolenis sam, expersped enda aboris solorum apid ut faccaboria dolestias nis acipsunt velest,

Design Inspiration:  
Artificial Trees Above Factories

## Slide 10: Large Flexible Space for Community Programs

Burbank Junction will unite a physically divided community by creating a unique landscape that honors and fulfills our natural need for connection- with our fellow man, with our communal history, and with the natural world that sustains and inspires us.

*Thanks for your consideration!*