

ASLALA

orange county

santa barbara

central coast

the desert

inland empire

los angeles

ventura

ISSUE 2

SPRING 2024

orange county

santa barbara

Promoting landscape architecture through advocacy, education, communication, and fellowship.

the desert

Advocacy / Diversity / Education / Fellowship / Stewardship

los angeles

ventura

ASLA



Healthy, beautiful, safe, and resilient landscapes **for all.**

AAAL

central coast
inland empire



in this issue

President's Message 4

Trustee Update 6

Quality of Life Design Awards. 8

Membership Update 11

Our Story 12

Past Event Photos 15

Upcoming Events. 18

Executive Committee 20

Sponsors 20

President's Message



by **Hongjoo Kim, ASLA, PLA**
President

Dear SoCal ASLA Chapter,

Crafting sustainable open spaces transcends design techniques; it involves weaving narratives that evolve dynamically, touching lives profoundly. Amidst global challenges like climate change and healthcare issues, landscape architects find profound purpose. Our spaces aren't static; they flourish and transform gracefully. It's a privilege to steward this transformative profession.

Let's celebrate our 2023 triumphs: the Climate Action Symposium, Quality of Life awards, engaging programs, and student connections. ASLA's advocacy efforts, championing licensure protection and equity, fill us with pride. Notably, our profession attains STEM status—an amazing accomplishment!

“Crafting sustainable open spaces transcends design techniques.”

Awareness and Connection

As SoCal ASLA President, my focus is fostering awareness and connection. I pledge to convey messages that raise consciousness and strengthen bonds. We stand as beacons, championing pivotal causes and connecting diverse members and professional communities. Acknowledging generational shifts, we honor past contributions while nurturing emerging leaders. Geographical diversity demands strategic outreach planning. Our board ensures accessibility for all members, fostering a harmonious blend of initiatives. Looking ahead, SoCal ASLA remains committed to your career advancement. Collaborating with dedicated individuals, we provide growth opportunities and uphold excellence.

Lastly, I would like to thank our sponsors for their unwavering support. Together, let's embrace the future, shaping vibrant narratives in our communities and the world.

Warm regards,

Hongjoo Kim, ASLA, PLA



HIGH QUALITY Outdoor Products

- Playground Equipment
- Shade
- Site Furniture
- Sports Equipment
- Surfacing
- Water Play



714.619.0100 or coastrecreation.com



Discover the products
to bring your vision
to life!

Contact us today for more
information.

Trustee Update

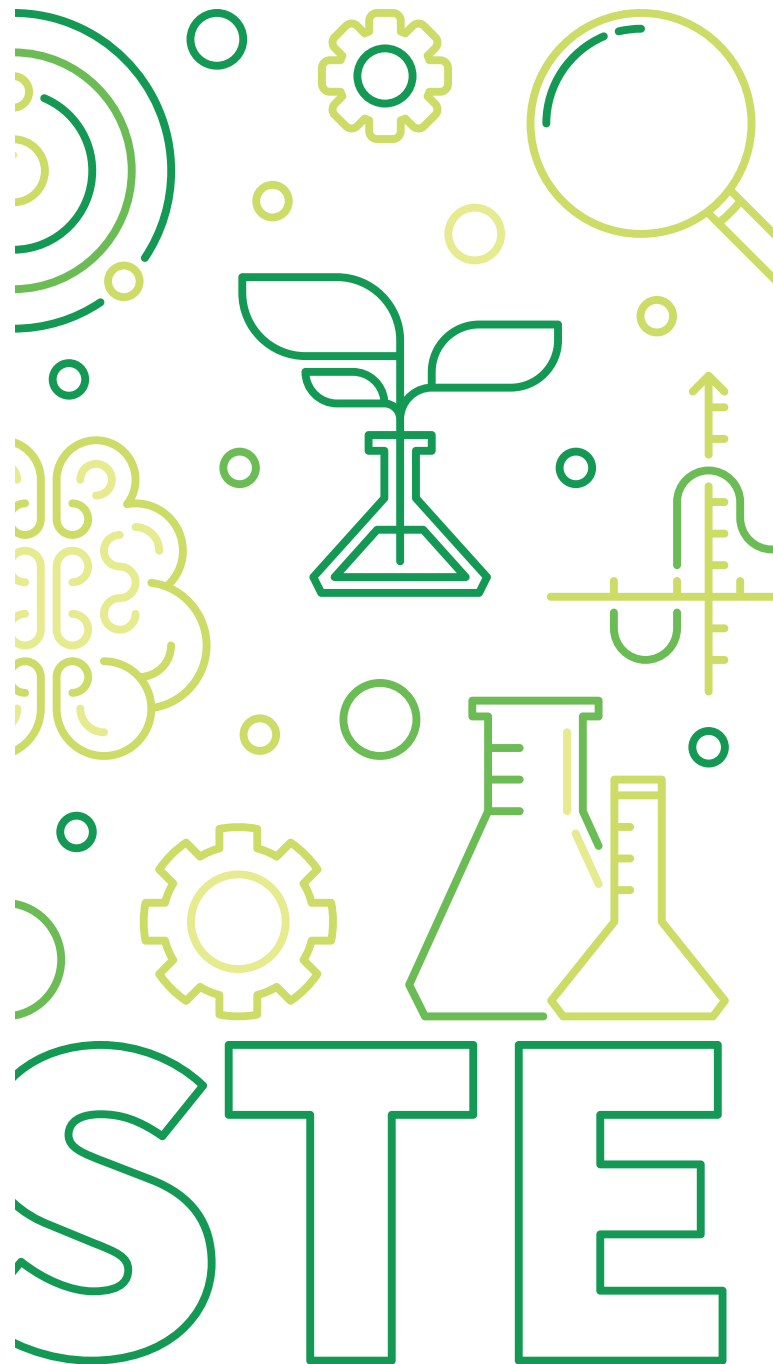


by **Evan Mather, FASLA**
Chapter Trustee

Dear Members of the Southern California Chapter

I wanted to take this opportunity to share a few items with you that came out of the Board of Trustees (BOT) meeting I attended at the recent ASLA 2023 Conference on Landscape Architecture in Minneapolis.

The BOT meeting, along with the conference at large, was abuzz with recent news: **ASLA has earned recognition as a STEM profession.** This designation holds the potential for transformative impact on the growth of our field. Students inclined toward science and technology careers might now consider Landscape Architecture as a viable career path. According to ASLA, this designation acknowledges the extensive science, technology, engineering, and mathematics coursework integral to landscape architecture collegiate programs. For those of us engaged in outreach efforts targeting middle and high schools to expand and diversify our profession, the STEM designation validates the technical expertise we possess in crafting healthy, beautiful environments.



ASLA has earned the recognition as a STEM profession...potential for transformative impact on the growth of our field.

The BOT also approved a new policy statement on Biodiversity: **ASLA believes the biodiversity of ecosystems and all living species are essential for the health and welfare of our communities and our planet.**

ASLA supports the protection, restoration, and enhancement of biodiversity through:

- ~ Protecting threatened and endangered species and their habitats
- ~ Establishing protected areas that reconnect critical habitats and restore natural migration corridors
- ~ Facilitating the restoration of wetlands and other critical habitats
- ~ Promoting the use of native plant species and eliminating invasive species
- ~ Creating nature-based infrastructure that supports biodiverse habitat and ecosystem services
- ~ Designing spaces to provide ecosystem services—such as clean air and water, carbon sequestration, and wildlife habitat—that improve biodiversity

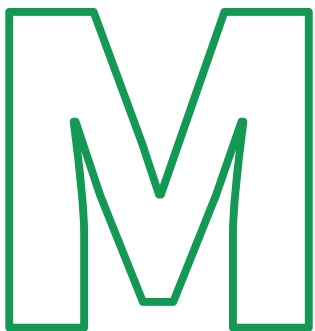
The BOT also approved the annual operating budget for the Society. In the coming months, you can expect to see a new quarterly publication dedicated to providing ASLA information directly to our members. This publication will be included as an insert within Landscape Architecture Magazine.

Lastly, keep an eye out for early bird registration opening soon for the next annual conference scheduled for October 2024 in Washington, DC. The conference will mark the 125th anniversary of the founding of ASLA, and we anticipate a range of commemorative events and celebrations.

Thank you once again for the opportunity to serve as your Trustee.

Warm regards,

Evan Mather, FASLA



2023 Quality of Life Design Awards



by **Victoria Phillipy, Hon. ASLA**
Executive Director

On October 12, 2023, over 150 professionals came together to celebrate the chapter's biennial Quality of Life Design Awards. The evening celebration was held at the new Anaheim Westin Resort across the street from the happiest place on earth.

SWA Los Angeles received both an Honor Award and Award of Excellence for Pazhou South Water Park.

Twelve additional honor awards were presented along with twenty-two merit awards.

The Southern California Chapter extends special thanks to Lisa and Shane Parrish at Team PMP as well as the entire team from Pulse Staging for the evening's production of the event.



Pazhou South Water Park, SWA Los Angeles

[VIEW AWARD WINNERS, PHOTOS AND VIDEO](#)



Pamela Burton & Co. received the President's Award, a new award for 2023, for the Mid-Century Modern Home and Garden project.



Mid Century Modern Home and Garden, Pamela Burton



1 - TITLE SHEET WITH STATEMENT OF SIGNIFICANCE



3 - ILLUSTRATIVE SITE PLAN

The Public Stewardship Award for 2023 was presented to **Alison Terry, ASLA** and **Lisa Gimmy, ASLA** for the recently completed Level 1 Historical American Landscapes Survey (HALS) documentation for the Virginia Robinson Gardens, an almost entirely volunteer three-year long effort. The documentation includes large-format photography, 53 sheets of measured drawings, and a 163-page written history. In March of 2023, the Virginia Robinson Gardens Historic American Landscapes Survey (HALS) Documentation was selected to receive a 2023 Preservation Design Award in the Cultural Resource Studies, Reports category.

HALS Virginia Robinson Gardens
Alison Terry and Lisa Gimmy



since 1979
dave bang 
associates inc.
▶ park+playground outfitters



▶ park+playground outfitters

ONE STOP FOR ALL THE BEST BRANDS.

At Dave Bang Associates, we specialize in solutions that are balanced: budget and “wow” factor, creativity and function, challenge and safety. With 40+ years of experience and all the top brands, we have you covered no matter the project. From concept, design, planning, and ordering, to delivery, storage, install, service, and support, our team of experts will be by your side to make sure your project is a massive success.

Picking the right manufacturers to fit your project can make all the difference. That is why we offer the widest selection of park + playground solutions in the industry, giving you the power to choose what’s right for your project without the hassle of coordinating with multiple vendors.



Community
+
Connection
+
Adventure



1.800.669.2585
DAVEBANG.COM

Membership Update



by David Watts, ASLA
Membership Committee

TOTAL MEMBERSHIP
INCLUDING STUDENTS

866

61-70 YEARS
6 members

70-80 YEARS
2 members

51-60 YEARS
12 members

41-50 YEARS
46 members

31-40 YEARS
43 members

21-30 YEARS
78 members

11-20 YEARS
100 members

<10 YEARS
579 members





Our Story

The Southern California Chapter



by **Victoria Phillipy, Hon. ASLA**
Executive Director

Katherine Bashford and **Fred Barlow, Jr.** were both involved in founding the Southern California Chapter in 1937, organized partly from the defunct Pacific Coast Chapter. Ralph Cornell was elected Chapter President by a handful of members at a time when the American economy was experiencing the third worst downturn of the 20th century.

As partners in their firm, Bashford and Barlow, Katherine and Fred designed numerous residential gardens and the landscape design for Pepperdine College. Katherine's desire was to make gardens and home settings align with the California spirit. Katherine Bashford was elected Fellow of ASLA in 1936. She then became the first female Chapter President of the Chapter in 1939. By 1940, the Chapter had 10 ASLA members.



Katherine Bashford



Fred Barlow, Jr.

Ruth Shellhorn was among the most important Southern California landscape architects of the post-war era. Members elected Ruth Shellhorn as Chapter President, serving from 1946 until the end of 1948. She was a fierce champion of the profession and helped push National ASLA efforts in the fight for state registration and licensure. Her focus on planning meetings and letter writing campaigns led to successful legislation in California, the first state to take this step.

During World War II, Ruth Shellhorn worked on the Shoreline Development Study, which established restrictions on oil drilling in Santa Monica Bay and became a precedent for the goals of the California Coastal Act. Over her 60-year career, Ruth designed landscapes and site plans, creating modernistic designs that evoked a sun-soaked leisurely lifestyle.

In 1956, she was hired by Walt Disney, and was responsible for Disneyland's comprehensive pedestrian circulation system, entrance, main street, and plaza hub. She created the small-town American feeling envisioned by Walt Disney. Ruth Shellhorn was elected Fellow of ASLA in 1971.



Ruth Shellhorn with Walt Disney, Disneyland, 1955. - Photograph by Harry Kueser. Courtesy of Kelly Conras.



Town Square, Disneyland, 1955. - Courtesy Ruth Shellhorn Papers, Library Special Collections, Charles E. Young Research Library, UCLA.



In the early years of the organization, when there were hardly any female landscape architects, it is particularly notable for the chapter to have had two accomplished women landscape architects who were committed to service in the organization as Chapter Presidents. They also left their mark as champions of the profession and in their landscape designs of many iconic landmark projects.

A final footnote to our chapter story: In 1954, after the appointment of the State Registration of California Landscape Architects Board by California Governor Goodwin Knight, the American Institute of Landscape Architects (AILA) was formed. It had begun as the Southern California Landscape Architects (SCLA). Perceived as a rival of ASLA, AILA's objective was to provide the "middle ground" bringing together landscape designers, practitioners, and other green industry professionals to discuss common problems and experiences. In 1982, AILA merged with ASLA resulting in increased membership for the Southern California Chapter.

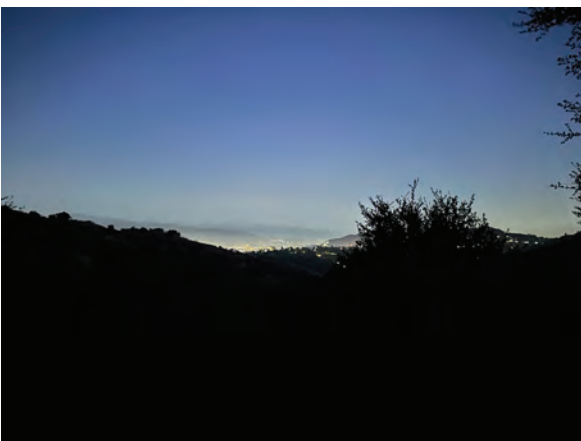
In the early 70's, sections were formed for regions within the Southern California Chapter, which included sections for the Desert; City of Los Angeles, Ventura/Santa Barbara, and the Central Coast. Las Vegas, a part of the Southern California chapter territory in the beginning, became a section in 1990. In 1998, southern Nevada met the member threshold and gained full chapter status. San Diego, also a part of the chapter's territory, formed a new chapter in 1976.

With a new century came an awareness of a generational shift in the professional membership. This prompted the chapter to disband the sections due to lack of interest and mindset from the younger professionals in maintaining any section status.



BALLONA CREEK CLEANUP

TREE PEOPLE MOONLIGHT HIKE





EMERGING PROFESSIONALS MEETUP

Upcoming Events

[VIEW ALL OUR
UPCOMING EVENTS](#)

MARCH

30 CELEBRATE SPRING
SUNNYLANDS
RANCHO MIRAGE
11:00AM – 2:00 PM

[DETAILS + REGISTRATION](#)



APRIL

5 LIVING ON THE EDGE –
COASTAL RESIDENTIAL
DESIGN AWARDS
DEADLINE

[LEARN MORE](#)

13 FRANK LLOYD WRIGHT
GARDENS SYMPOSIUM
WILSHIRE EBELL THEATRE
10:00AM – 4:00PM

[DETAILS + REGISTRATION](#)

MAY

23 CALIFORNIA GREEN
BUILDING CONFERENCE
BEEHIVE, SOUTH LA

[LEARN MORE](#)



Licensure Fee Increase

The Landscape Architects Technical Committee (LATC) is self-funded by licensing fees and has been diligent to control operational and staffing expenses; however, costs imposed that are outside of LATC's control have made it impossible to keep the budget in balance.

Until now, an operational reserve helped defray these costs which is why the fees were lowered to utilize the reserves. **The main reasons for these fee increases are operational and staffing expenses, including costs related to LATC's business modernization efforts to update legacy IT platforms to a modern IT system.**

During its November 2022 meeting, the LATC reviewed extensive research and analysis of its existing fee structure. This was a culmination of efforts to address a serious budget situation brought to its attention and potentially leading to insolvency.

At the current fee structure, LATC would become insolvent sometime during the 2024 fiscal year due to its reserve funds becoming depleted. By law, this is not permissible. To maintain LATC's fiscal balance, a new fee structure was devised following careful consideration of numerous factors.



This will be the first time that the LATC has increased license and examination fees in 14 years to cover increased operational costs. This effort will bring fees in line with the actual cost to provide the services to licensees and the public. The new fee structure will become effective January 1, 2024. For additional information please contact LATC at (916) 575-7230 or <https://www.latc.ca.gov/>.

Executive Committee, Chairs, Members-At-Large, and Liaisons



Hongjoo Kim, ASLA
PRESIDENT
Hongjoo Kim Landscape
Architects, Los Angeles



Scott Rice
PRESIDENT-ELECT
Community Works Design
Group, San Bernardino County



Pamela Brief, ASLA
PAST PRESIDENT
Pamela Studios, Los Angeles



Evan Mather, ASLA
CHAPTER TRUSTEE
AHBE | MIG, Inc., Los Angeles



Chuck Foley, ASLA
VP SPONSORSHIP
Hirsch Associates, Orange
County



David Watts
VP MEMBERSHIP
Cal Poly San Luis Obispo



Doug Short
SECRETARY
DSD Landscape



Melanie Buffa, ASLA
TREASURER
Agency Artifact, Los Angeles



David Tatsumi, ASLA
CCASLA DELEGATE
Tatsumi and Partners,
Orange County



Stephanie Landregan,
FASLA
CCASLA DELEGATE #2
Program Director, UCLA Extension



Colleen Cochran
CHAPTER PROGRAMS
Landscape Designer,
Los Angeles



Alison Terry, ASLA
HALS
Terry Design Inc., Fullerton



Jared McKnight
EMERGING
PROFESSIONALS
WRT LLC, Los Angeles



Kim Rhodes
STUDENT FIELD TRIP
David Evans and Associates,
San Bernardino County



Tricia O'Connell, PLA,
ASLA
LIAISON TO STUDENTS
Landscape Architect
Los Angeles



Steve Lang
**AWARDS HISTORIAN/
JURY FACILITATOR /
MEMBER-AT-LARGE**
MIG, Inc.



Nicole Hourian, ASLA
PROGRAMS
MEMBER-AT-LARGE
Hourian Associates, Central Coast



Victoria Phillipy,
Hon. ASLA
EXECUTIVE DIRECTOR
Phillipy + Company, Orange
County and Los Angeles



Andy Bowden, FASLA
CHAPTER FELLOWS CHAIR
Landscape Architect, Orange County



Interested in volunteering?
Contact Vicki Phillipy for available positions.



USASHADE
& Fabric Structures.



BrightView



PARK WEST



FORMS+SURFACES



INTERESTED IN BECOMING A SPONSOR?
[VISIT OUR WEBSITE](#) FOR MORE INFORMATION.

